

# The Foulsham Collection 5 Hawk-moths

Species by column from top left  
*Top*

- 1 Elephant Hawk-moth
- 2 Privet Hawk-moth
- 3a Death's-head Hawk-moth
- 3b Convolvulus Hawk-moth
- 3c Oleander Hawk-moth
- 4 Eyed Hawk-moth

*Bottom*

- 1 Lime Hawk-moth
- 2 Small Elephant Hawk-moth
- 3a Pine Hawk-moth
- 3b Spurge Hawk-moth
- 3c Bedstraw Hawk-moth
- 4a Striped Hawk-moth
- 4b Silver-striped Hawk-moth
- 4c Poplar Hawk-moth
- 5 Humming-bird Hawk-moth
- 6a Broad-bordered  
Bee Hawk-moth
- 6b Narrow-bordered  
Bee Hawk-moth



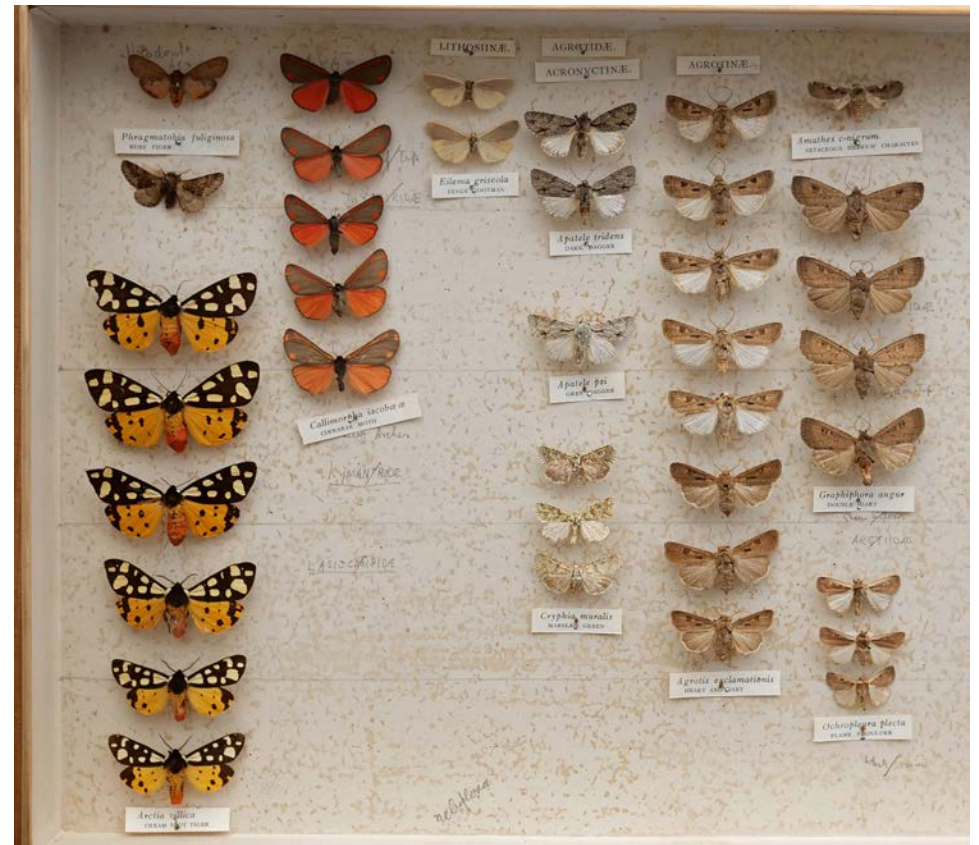
# The Foulsham Collection

6 Moths

Clouded Border etc



Cream-spot Tiger etc



MOTHS: Heart and Club



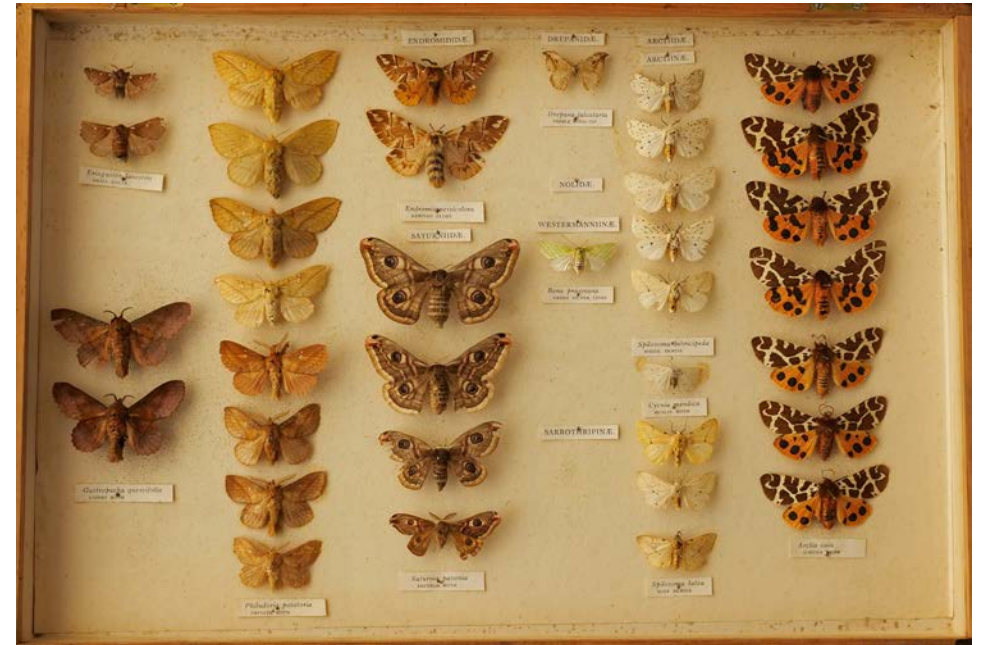
MOTHS: Red Underwing etc



MOTHS: Puss Moth etc



MOTHS: Small Eggar etc



# The Foulsham Collection

## 9 Moths

Species by column from top left		
<i>Top</i>		<i>Bottom</i>
1	Square-spot Rustic	7a Small Angle Shades
2	Square-spot Rustic	4 upside down
3a	Mother Shipton 6	7b Large Nutmeg
3b	Small Magpie 1	8a Cabbage Moth
3c	Rustic sp 2	2 upside down
3d	Smoky Wainscot 1	8b ?
4a	Square-spot Rustic 9	8c Ingrailed Clay 3
4b	Smoky Wainscot 1 set left	8d Lesser-spotted Pinion
5a	Light Arches set right	8e Clay sp 4
5b	Olive	9a Bright-line Brown-eye
5c	Dun-bar	2 upside down
5d	Turnip Moth	9b Large Nutmeg or
5e	Treble Lines 2	Dusky Brocade?
6a	Small Angle Shades	9c Clay sp 4
	3 upside down	
6b	Early Grey 6	
6c	Small Square-spot	

**Moths 2nd tray:** unlabelled



THE MULLEIN MOTH  
GATERPILLARS OF THIS MOTH FEED ON  
MULLEIN [THE VERBASCUM THAPSAS] HENCE  
ITS NAME. THEY TURN INTO CHRYSALISES IN  
JULY AND NEXT YEAR WILL EMERGE AS  
MOTHS LIKE THOSE ABOVE IN LATE APRIL  
OR MAY, THOUGH THEY ARE RARELY SEEN  
IN THE OPEN.

