

BC Devon Roger Bristow Memorial Butterfly Walks

Welcome to BC Devon Branch's Roger Bristow Memorial Butterfly Walks. These walks cover places in our county which are good places to see particular butterflies at different times of the Spring and Summer. Our aim is to add more walks to the BC Devon In Your Area web site - so do return and check for new listings. If you have any further butterfly walk suggestions we would love to hear from you. Please email the branch on contact@devon-butterflies.org.uk.

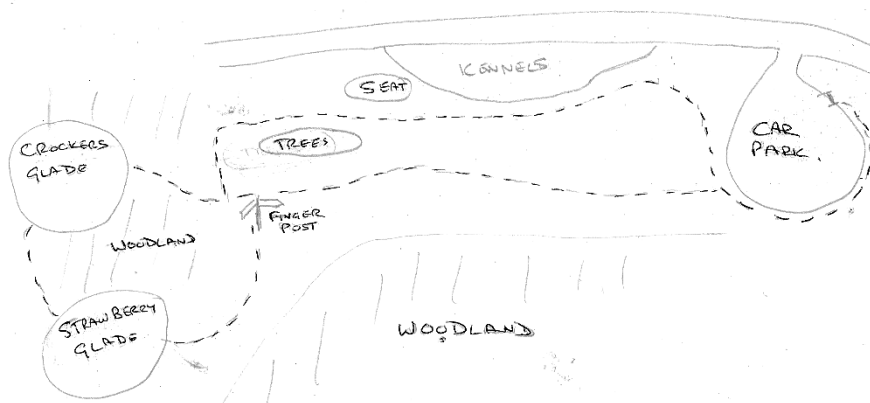
These Devon Butterfly Walks are in remembrance of a much respected and highly regarded member of Butterfly Conservation, Roger Bristow, who passed away in September 2020. Roger was one of the founding members of the Devon Branch of Butterfly Conservation and he played a huge role in improving the knowledge of Devon's butterflies.

Roger served on the branch committee for many years and took on many roles from Chairman, Newsletter Editor and, most significantly, as the Devon County Recorder for 35 years. He was always very generous with his time giving talks and attending public events to raise awareness and share his knowledge of butterflies.

Walk 4 – Kerswell Down Butterfly Walk – by David Poole

Getting there: Kerswell Down is on the edge of Kingskerswell near Newton Abbot. From the A380 (not the Devon Expressway) go to the village centre (Fore Street) cross the railway bridge, turn right and first left by St. Mary's church, up a steep hill then sharp right at top and then left into Maddacombe road (which then crosses over the Expressway). The car park (SX870677 nearest postcode TQ125LF) is immediately on the left and has about 12 spaces, Sundays can be busy. Alternative parking usually possible in Greenhill Road, a short walk away.

Access: From the car park a stony path rises and at the bench turn sharp right and follow the steep track (slippery when wet) with the railing on your right. You then arrive at the level plateau of the main meadow. Paths are unmade but easy to follow. Many of the butterflies can be seen on this plateau and a circular walk round the main meadow (see rough diagram below which is not to scale) is suggested for grassland butterflies. In the summer, to get the best out of your visit and include woodland butterflies, please see the additional circuit round the two glades within the woodland area (again on the diagram below). This part of the walk also has some steep paths. The overall distance is less than 2km. **Cautionary note, due to the effect of Ash die Back, it is advisable to avoid visiting when strong winds are forecast.**



Key species: Brown Argus, small numbers from May, peaking in August. Common Blue, Marbled White and Ringlet (late June – July) Small Copper, Silver Washed Fritillary (best July/August), occasional White Admiral.

Other species: include: Brimstone, Holly Blue, Comma (most months), Green Veined White from April,

Orange Tip (April/May), Large Skipper (late June/July), Gatekeeper, Small Skipper. Day flying moths include Cinnabar, Green Longhorn, Scarlet Tiger, 6 Spot Burnet.

Other information: Gifted to the Parish Council in 2000, the site is designated as a County Wildlife Site recognising the importance of its calcareous geology and the herb rich unimproved grassland which supports uncommon species of flora and variety of invertebrates.

Examples are : Ploughman's Spikenard , Common Gromwell, Houndstongue, 5 types of Orchid, Red Bartsia, Ladies Bedstraw, Moschatel, Dropwort, Salad Burnet, Musk Mallow. 4 species of Cricket, many Shieldbugs, Southern Hawker, Ringed Dragonfly, Carder and several other Bee species. Beetles including Bloody Nosed, Longhorns, Lesser Stag. Wasp Spider & hoverflies such as Bumble Bee mimics.

The large meadow, 2 glades and other open areas are managed for wildlife by Kingskerswell Natural History Society in partnership with the Parish Council. New volunteers to help with the conservation management work are always welcome, membership of KNHS is not necessary.



Brown Argus



Brown Argus



Common Blue – female



Common Blue – male



Marbled White (male)



Marbled White (female)



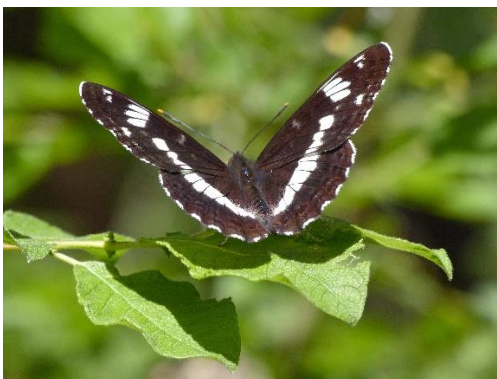
Ringlets



Ringlet



Silver washed Fritillary



White Admiral

All photos by Amanda Hunter