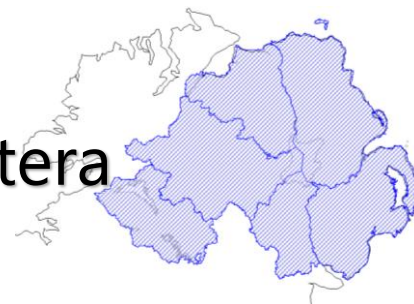


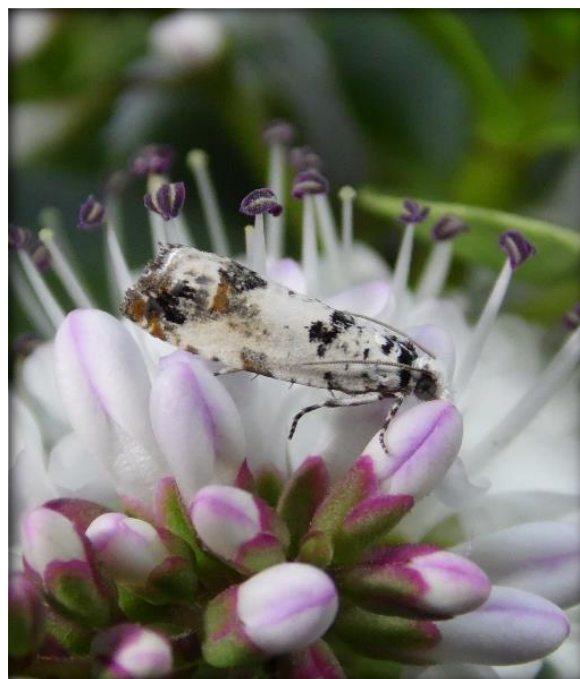
# 2014 County Checklists of Northern Ireland Microlepidoptera



This checklist provides county distributions for our local micro-moth species, based on records up to the start of 2014.

The work was done with the support of the Centre for Environmental Data and Recording (CEDaR), as part of the ongoing Microlepidoptera Initiative which aims to increase knowledge of this species group in NI. It complements the *2014 Checklist of Northern Ireland Microlepidoptera* by Ken Bond and John McClean. As that publication highlighted, 615 micro-moth species have been recorded here as of the start of 2014, and species continue to be added to the list year on year.

Distribution maps for the whole of Ireland are being developed by the Moths Ireland group at their website: [www.mothsireland.com](http://www.mothsireland.com).



## Technical information

The county distributions were produced based on the 2014 checklist of NI Microlepidoptera (Bond & McClean, 2014) and records held on the CEDaR database dated up to 31/12/2013 and last modified prior to 04/06/2014. Some queried records have not been included.

The taxonomy and numbering in the new British Lepidoptera checklist (Agassiz, Beaven & Heckford, 2013) is followed throughout. The old Bradley & Fletcher checklist numbers and names are included, along with some other obsolete names (indented and in non-bold font). Commonly-used English names are also included, mainly following Agassiz *et al.*

Subspecies and forms recorded from the province are listed, although some have not been recognised as valid by Agassiz *et al.* They have not been given distributions.

Samuel Millar, 20 Nov 2014

## Checklist

ABH	B&F	Taxon name	Vernacular name	Counties
Family— <b>MICROPTERIGIDAE</b>				
1.003	3	<i>Micropterix aureatella</i> (Scopoli, 1763)		FE TY AR AN LD
1.004	4	<i>Micropterix aruncella</i> (Scopoli, 1763)		FE TY AR DO AN LD
1.005	5	<i>Micropterix calthella</i> (Linnaeus, 1761)		FE AR DO AN LD
<b>ERIOCRANIIDAE</b>				
2.001	6	<i>Dyseriocrania subpurpurella</i> (Haworth, 1828)		TY AR DO AN
2.001	6	<i>Eriocrania subpurpurella</i> (Haworth, 1828)		
2.003	8	<i>Eriocrania unimaculella</i> (Zetterstedt, 1839)		AR
2.003	8	<i>Heringocrania unimaculella</i> (Zetterstedt, 1839)		
2.004	9	<i>Eriocrania sparrmannella</i> (Bosc, 1791)		FE LD
2.005	10	<i>Eriocrania salopiella</i> (Stainton, 1854)		TY AR AN LD
2.007	13	<i>Eriocrania semipurpurella</i> (Stephens, 1835)		AR DO
2.008	12	<i>Eriocrania sangii</i> (Wood, 1891)		AR DO
<b>NEPTICULIDAE</b>				
4.002	116	<i>Stigmella lapponica</i> (Wocke, 1862)		FE TY DO AN LD
4.003	117	<i>Stigmella confusella</i> (Wood & Walsingham, 1894)		FE TY AR DO AN LD
4.005	110	<i>Stigmella betulicola</i> (Stainton, 1856)		FE TY AR
4.007	112	<i>Stigmella luteella</i> (Stainton, 1857)		FE TY AR DO AN
4.009	115	<i>Stigmella alnetella</i> (Stainton, 1856)		AR DO
4.010	111	<i>Stigmella microtheriella</i> (Stainton, 1854)		FE TY AR DO AN LD
4.015	92	<i>Stigmella anomalella</i> (Goeze, 1783)	Rose Leaf Miner	FE DO AN
4.018	80	<i>Stigmella ulmivora</i> (Fologne, 1860)		AR
4.023	108	<i>Stigmella crataegella</i> (Klimesch, 1936)		TY AR DO AN LD
4.024	104	<i>Stigmella magdalenae</i> (Klimesch, 1950)		TY
4.025	103	<i>Stigmella nylandriella</i> (Tengström, 1848)		FE TY DO LD
4.026	100	<i>Stigmella oxyacanthella</i> (Stainton, 1854)		FE AN
4.030	99	<i>Stigmella hybnerella</i> (Hübner, 1796)		FE TY AR DO AN LD
4.032	75	<i>Stigmella floslactella</i> (Haworth, 1828)		FE TY AR DO AN LD
4.034	77	<i>Stigmella tityrella</i> (Stainton, 1854)		FE TY AR DO AN LD
4.035	68	<i>Stigmella salicis</i> (Stainton, 1854)		FE TY AR DO AN LD
4.036	72	<i>Stigmella myrtillella</i> (Stainton, 1857)		TY AR DO
4.038	70	<i>Stigmella obliquella</i> (Heinemann, 1862)		AR
4.039	73	<i>Stigmella trimaculella</i> (Haworth, 1828)		AN
4.041	66	<i>Stigmella sorbi</i> (Stainton, 1861)		FE TY
4.042	67	<i>Stigmella plagicolella</i> (Stainton, 1854)		FE TY AR AN LD
4.043	63	<i>Stigmella lemniscella</i> (Zeller, 1839)		AR
4.044	64	<i>Stigmella continuella</i> (Stainton, 1856)		FE TY LD
4.045	50	<i>Stigmella aurella</i> (Fabricius, 1775)		FE TY AR DO AN LD

ABH	BF	Taxon name	Vernacular name	Counties
4.047	53	<i>Stigmella splendidissima</i> (Herrich-Schäffer, 1855)		DO AN LD
4.052	57	<i>Stigmella filipendulae</i> (Wocke, 1871)		DO
4.052	57	<i>Stigmella ulmariae</i> (Wocke, 1879)		
4.053	78	<i>Stigmella incognitella</i> (Herrich-Schäffer, 1855)		DO
4.054	79	<i>Stigmella perpygmaeella</i> (Doubleday, 1859)		AR DO AN LD
4.055	81	<i>Stigmella hemargyrella</i> (Kollar, 1832)		FE TY AR DO AN LD
4.059	87	<i>Stigmella svenssoni</i> (Johansson, 1971)		TY
4.060	84	<i>Stigmella ruficapitella</i> (Haworth, 1828)		TY AR DO AN
4.061	83	<i>Stigmella atricapitella</i> (Haworth, 1828)		FE TY DO AN LD
4.068	46	<i>Trifurcula immundella</i> (Zeller, 1839)		TY AR
4.071	40	<i>Bohemannia pulverosella</i> (Stainton, 1849)		AR AN
4.072	19	<i>Bohemannia quadrimaculella</i> (Boheman, 1853)		AN
4.078	42	<i>Ectoedemia septembrella</i> (Stainton, 1849)		AR DO AN
4.082	25	<i>Ectoedemia intimella</i> (Zeller, 1848)		AR
4.085	23	<i>Ectoedemia argyropeza</i> (Zeller, 1839)		FE
4.089	37	<i>Ectoedemia albifasciella</i> (Heinemann, 1871)		FE AR
4.090	38	<i>Ectoedemia subbimaculella</i> (Haworth, 1828)		AR DO AN
4.091	39	<i>Ectoedemia heringi</i> (Toll, 1934)		AN
4.094	28	<i>Ectoedemia angulifasciella</i> (Stainton, 1849)		FE AN LD
4.095	29	<i>Ectoedemia atricollis</i> (Stainton, 1857)		AN
4.096	30	<i>Ectoedemia arcuatella</i> (Herrich-Schäffer, 1855)		FE
4.098	27	<i>Ectoedemia spinosella</i> (Joannis 1908)		TY AR
4.099	34	<i>Ectoedemia occultella</i> (Linnaeus, 1767)		FE TY AR DO AN LD
4.100	35	<i>Ectoedemia minimella</i> (Zetterstedt, 1839)		TY AR DO
<b>OPOSTEGIDAE</b>				
5.001	119	<i>Opostega salaciella</i> (Treitschke, 1833)		FE AR DO
5.004	121	<i>Pseudopostega crepusculella</i> (Zeller, 1839)		FE AR DO AN
<b>HELIOZELIDAE</b>				
6.003	154	<i>Heliozela sericiella</i> (Haworth, 1828)		AR DO AN
6.004	156	<i>Heliozela resplendella</i> (Stainton, 1851)		TY AR AN LD
6.005	157	<i>Heliozela hammoniella</i> Sorhagen, 1885		FE TY AR AN LD
<b>ADELIDAE</b> Longhorns				
7.001	148	<i>Nemophora degeerella</i> (Linnaeus, 1758)		TY DO
7.005	145	<i>Nemophora minimella</i> ([Denis & Schiffermüller], 1775)		TY AR AN
7.006	150	<i>Adela reaumurella</i> (Linnaeus, 1758)		FE
7.007	149	<i>Adela cuprella</i> ([Denis & Schiffermüller], 1775)		AR LD
7.010	152	<i>Cauchas rufimitrella</i> (Scopoli, 1763)		FE TY AR DO AN
7.010	152	<i>Adela rufimitrella</i> (Scopoli, 1763)		
7.012	141	<i>Nematopogon schwarziellus</i> Zeller, 1839		FE AR DO AN
7.014	143	<i>Nematopogon metaxella</i> (Hübner, [1813])		DO
7.015	140	<i>Nematopogon swammerdamella</i> (Linnaeus, 1758)		FE TY AR DO AN LD
<b>INCURVARIIDAE</b>				
8.001	129	<i>Incurvaria pectinea</i> Haworth, 1828		FE TY AR DO LD
8.002	130	<i>Incurvaria masculella</i> ([Denis & Schiffermüller], 1775)		FE TY AR DO AN LD

ABH	BF	Taxon name	Vernacular name	Counties
8.003	131	<i>Incurvaria oehlmanniella</i> (Hübner, 1796)		FE TY AR
8.004	132	<i>Incurvaria praelatella</i> ([Denis & Schiffermüller], 1775)		TY AR AN LD
8.005	128	<i>Phylloporia bistrigella</i> (Haworth, 1828)		FE TY AR DO LD
<b>PRODOXIDAE</b>				
9.002	135	<i>Lampronia luzella</i> (Hübner, [1817])		DO AN
9.003	136	<i>Lampronia corticella</i> (Linnaeus, 1758)	Raspberry Moth	FE TY AR DO AN LD
9.007	139	<i>Lampronia pubicornis</i> (Haworth, 1828)		LD
<b>TISCHERIIDAE</b>				
10.001	123	<i>Tischeria ekebladella</i> (Bjerkander, 1795)		FE DO AN
10.003	125	<i>Coptotriche marginea</i> (Haworth, 1828)		AN
10.003	125	<i>Emmetia marginea</i> (Haworth, 1828)		
<b>PSYCHIDAE</b>				
Bagworms				
11.001	180	<i>Diplodoma laichartingella</i> Goeze, 1783		FE AR LD
11.001	180	<i>Diplodoma herminata</i> (Geoffroy, 1785)		
11.013	187	<i>Psyche crassiorella</i> Bruand, 1851		TY
<b>TINEIDAE</b>				
12.009	198	<i>Dryadula pactolia</i> Meyrick, 1902		FE AR
12.015	215	<i>Nemapogon granella</i> (Linnaeus, 1758)	Corn Moth	DO
12.016	216	<i>Nemapogon cloacella</i> (Haworth, 1828)	Cork Moth	FE TY AR DO AN LD
12.021	220	<i>Nemapogon clematella</i> (Fabricius, 1781)		AR DO
12.025	234	<i>Trichophaga tapetzella</i> (Linnaeus, 1758)	Tapestry Moth	FE AR DO ‡
12.027	240	<i>Tinea pellionella</i> Linnaeus, 1758	Case-bearing Clothes Moth	FE TY AR DO AN
12.029	244	<i>Tinea flavescens</i> Haworth, 1828		AR DO
12.030	245	<i>Tinea pallescentella</i> Stainton, 1851	Large Pale Clothes Moth	AR DO AN
12.032	246	<i>Tinea semifulvella</i> Haworth, 1828		FE TY AR DO AN LD
12.033	247	<i>Tinea trinotella</i> Thunberg, 1794		FE TY AR DO AN
12.034	237	<i>Niditinea fuscella</i> (Linnaeus, 1758)	Brown-dotted Clothes Moth	AN
12.036	227	<i>Monopis laevigella</i> ([Denis & Schiffermüller], 1775)		
			Skin Moth	FE TY AR DO AN LD
12.037	228	<i>Monopis weaverella</i> (Scott, 1858)		FE DO LD
12.039	230	<i>Monopis crocicapitella</i> (Clemens, 1859)		AR
12.048	200	<i>Psychoides filicivora</i> (Meyrick, 1937)		TY AR DO AN
<b>BUCCULATRICIDAE</b>				
14.001	265	<i>Bucculatrix cristatella</i> (Zeller, 1839)		DO
14.002	266	<i>Bucculatrix nigricomella</i> (Zeller, 1839)		FE AN
14.003	267	<i>Bucculatrix maritima</i> Stainton, 1851		DO
14.008	272	<i>Bucculatrix cidarella</i> (Zeller, 1839)		FE TY AR AN
14.009	273	<i>Bucculatrix thoracella</i> (Thunberg & Wenner, 1794)		DO AN
14.010	274	<i>Bucculatrix ulmella</i> Zeller, 1848		DO AN
14.013	276	<i>Bucculatrix demaryella</i> (Duponchel, 1840)		AR AN LD
<b>GRACILLARIIDAE</b>				
15.002	280	<i>Caloptilia cuculipennella</i> (Hübner, 1796)		FE
15.004	282	<i>Caloptilia elongella</i> (Linnaeus, 1761)		FE TY AR DO AN LD
15.005	283	<i>Caloptilia betulicola</i> (M. Hering, 1928)		FE AR DO AN

ABH	BF	Taxon name	Vernacular name	Counties
15.006	284	<i>Caloptilia rufipennella</i> (Hübner, 1796)		AR DO AN
15.007	285	<i>Caloptilia azaleella</i> (Brants, 1913)	Azalea Leaf Miner	AR DO AN
15.008	286	<i>Caloptilia alchimiella</i> (Scopoli, 1763)		FE TY AR DO AN LD
15.010	288	<i>Caloptilia stigmatella</i> (Fabricius, 1781)		FE TY AR DO AN LD
15.014	293	<i>Gracillaria syringella</i> (Fabricius, 1794)		FE TY AR DO AN LD
15.014	293	<i>Caloptilia syringella</i> (Fabricius, 1794)		
15.015	294	<i>Aspilapteryx tringipennella</i> (Zeller, 1839)		FE AR DO AN LD
15.016	297	<i>Euspilapteryx auroguttella</i> (Stephens, 1835)		AR DO
15.016	297	<i>Calybites auroguttella</i> (Stephens, 1835)		
15.016	297	<i>Eucalybites auroguttella</i> (Stephens, 1835)		
15.018	292	<i>Povolnya leucapennella</i> (Stephens, 1835)		FE DO AN
15.018	292	<i>Caloptilia leucapennella</i> (Stephens, 1835)		
15.019	313	<i>Acrocercops brongniardella</i> (Fabricius, 1798)		AR
15.022	310	<i>Callisto denticulella</i> (Thunberg, 1794)		DO
15.025	301	<i>Parornix betulae</i> (Stainton, 1854)		FE AR DO
15.028	303	<i>Parornix anglicella</i> (Stainton, 1850)		FE TY AR DO AN LD
15.029	304	<i>Parornix devoniella</i> (Stainton, 1850)		FE TY AR DO AN LD
15.030	305	<i>Parornix scoticella</i> (Stainton, 1850)		FE TY AR DO LD
15.032	308	<i>Parornix finitimella</i> (Zeller, 1850)		AR
15.033	309	<i>Parornix torquillella</i> (Zeller, 1850)		FE AR DO AN LD
15.033	309	<i>Deltaornix torquillella</i> (Zeller, 1850)		
15.034	315	<i>Phyllonorycter harrisella</i> (Linnaeus, 1761)		FE AR DO AN
15.036	317	<i>Phyllonorycter heegeriella</i> (Zeller, 1846)		AR DO
15.039	320	<i>Phyllonorycter quercifoliella</i> (Zeller, 1839)		FE TY AR DO AN
15.040	321	<i>Phyllonorycter messaniella</i> (Zeller, 1846)		FE AR DO LD
15.043	323	<i>Phyllonorycter oxyacanthae</i> (Frey, 1856)		FE TY AR DO AN
15.044	324	<i>Phyllonorycter sorbi</i> (Frey, 1855)		FE TY AR DO AN LD
15.046	326	<i>Phyllonorycter blancardella</i> (Fabricius, 1781)		FE TY AR DO AN
15.049	329	<i>Phyllonorycter spinicolella</i> (Zeller, 1846)		FE TY AR DO AN LD
15.053	332a	<i>Phyllonorycter leucographella</i> (Zeller, 1850)	Firethorn Leaf Miner	TY AR DO AN
15.054	333	<i>Phyllonorycter viminiella</i> (Sircom, 1848)		AR
15.054	333	<i>Phyllonorycter salictella</i> (Zeller, 1846)		
15.056	335	<i>Phyllonorycter salicicolella</i> (Sircom, 1848)		FE TY AR DO AN
15.058	337	<i>Phyllonorycter hilarella</i> (Zetterstedt, 1839)		FE TY AR DO AN LD
15.063	341	<i>Phyllonorycter maestingella</i> (Müller, 1764)		FE TY AR DO AN LD
15.064	342	<i>Phyllonorycter coryli</i> (Nicelli, 1851)	Nut Leaf Blister Moth	FE TY AR DO AN LD
15.067	345	<i>Phyllonorycter rajella</i> (Linnaeus, 1758)		FE TY AR DO AN LD
15.071	349	<i>Phyllonorycter nigrescentella</i> (Logan, 1851)		FE TY AR DO AN LD
15.073	351	<i>Phyllonorycter lautella</i> (Zeller, 1846)		FE AR DO LD
15.075	353	<i>Phyllonorycter ulmifoliella</i> (Hübner, [1817])		FE TY AR DO AN
15.076	354	<i>Phyllonorycter emberizaepenella</i> (Bouché, 1834)		DO AN LD
15.081	359	<i>Phyllonorycter nicellii</i> (Stainton, 1851)		FE AR DO AN LD
15.083	361	<i>Phyllonorycter trifasciella</i> (Haworth, 1828)		FE AR DO AN LD
15.086	364	<i>Phyllonorycter geniculella</i> (Ragonot, 1874)		FE TY AR DO AN LD

ABH	BF	Taxon name	Vernacular name	Counties
<b>YPONOMEUTIDAE</b>				
16.001	424	<i>Yponomeuta evonymella</i> (Linnaeus, 1758)	Bird-cherry Ermine	FE TY AR DO AN LD
16.002	425	<i>Yponomeuta padella</i> (Linnaeus, 1758)	Orchard Ermine	FE TY AR DO AN LD
16.004	427	<i>Yponomeuta cagnagella</i> (Hübner, [1813])	Spindle Ermine	FE TY AR DO AN LD
16.010	435	<i>Zelleria hepariella</i> Stainton, 1849		FE AR DO AN
16.014	436	<i>Pseudoswammerdamia combinella</i> (Hübner, 1786)		FE TY AR
16.015	437	<i>Swammerdamia caesiella</i> (Hübner, 1796)		FE TY AR DO AN LD
16.017	438	<i>Swammerdamia pyrella</i> (Villers, 1789)		DO LD
16.018	439	<i>Swammerdamia compunctella</i> Herrich-Schäffer, 1855		AR DO AN LD
16.019	440	<i>Paraswammerdamia albicapitella</i> (Scharfenberg, 1805)		FE AR DO AN LD
16.020	441	<i>Paraswammerdamia nebulella</i> (Goeze, 1783)		FE TY AR DO AN
16.020	441	<i>Paraswammerdamia lutarea</i> (Haworth, 1828)		
16.022	443	<i>Cedestis subfasciella</i> (Stephens, 1834)		AN
16.024	445	<i>Ocnerostoma friesei</i> Svensson, 1966		AR
<b>YPSOLOPHIDAE</b>				
17.002	452	<i>Ypsolopha nemorella</i> (Linnaeus, 1758)		FE TY AR DO AN LD
17.003	453	<i>Ypsolopha dentella</i> (Fabricius, 1775)	Honeysuckle Moth	FE TY AR DO AN LD
17.010	460	<i>Ypsolopha parenthesesella</i> (Linnaeus, 1761)		FE TY AR DO AN LD
17.011	461	<i>Ypsolopha ustella</i> (Clerck, 1759)		FE AR DO AN
17.013	463	<i>Ypsolopha vittella</i> (Linnaeus, 1758)		FE DO AN
17.014	251	<i>Ochsenheimeria taurella</i> ([Denis & Schiffermüller], 1775)		AR DO AN
17.015	252	<i>Ochsenheimeria urella</i> Fischer von Röslerstamm, 1842		DO AN LD
<b>PLUTELLIDAE</b>				
18.001	464	<i>Plutella xylostella</i> (Linnaeus, 1758)	Diamond-back Moth	FE TY AR DO AN LD
18.003	465	<i>Plutella porrectella</i> (Linnaeus, 1758)		FE AR DO AN
18.005	467	<i>Rhigognostis annulatella</i> (Curtis, 1832)		DO
18.006	468	<i>Rhigognostis incarnatella</i> (Steudel, 1873)		FE TY AR DO AN LD
<b>GLYPHIPTERIGIDAE</b>				
19.001	470	<i>Orthotelia sparganella</i> (Thunberg, 1788)		FE AR DO
19.001	470	<i>Orthotaelia sparganella</i> (Thunberg, 1788)		
19.002	397	<i>Glyphipterix thrasonella</i> (Scopoli, 1763)		FE TY AR DO AN LD
19.005	395	<i>Glyphipterix haworthana</i> (Stephens, 1834)		AR DO AN
19.006	394	<i>Glyphipterix forsterella</i> (Fabricius, 1781)		TY AR
19.007	391	<i>Glyphipterix simpliciella</i> (Stephens, 1834)	Cocksfoot Moth	FE TY AR DO AN
19.008	392	<i>Glyphipterix schoenicolella</i> (Boyd, 1859)		DO
19.010	472	<i>Digitivalva pulicariae</i> (Klimesch, 1956)		FE DO
19.012	474	<i>Acrolepiopsis betulella</i> Curtis, 1838		AN
19.014	476	<i>Acrolepia autumnitella</i> Curtis, 1838		AR DO AN
<b>ARGYRESTHIIDAE</b>				
20.001	401	<i>Argyresthia laevigatella</i> Herrich-Schäffer, 1855		AR DO
20.005	409a	<i>Argyresthia trifasciata</i> Staudinger, 1871		TY AR DO AN LD
20.006	407	<i>Argyresthia dilectella</i> Zeller, 1847		AR AN
20.007	409b	<i>Argyresthia cupressella</i> Walsingham, 1890	Cypress Tip Moth	DO AN
20.011	410	<i>Argyresthia brockeella</i> (Hübner, [1813])		FE TY AR DO AN LD

ABH	BF	Taxon name	Vernacular name	Counties
20.012	411	<i>Argyresthia goedartella</i> (Linnaeus, 1758)		FE TY AR DO AN LD
20.013	412	<i>Argyresthia pygmaeella</i> ([Denis & Schiffermüller], 1775)		FE TY AR DO AN
20.015	414	<i>Argyresthia curvella</i> (Linnaeus, 1761)		TY AR
20.016	415	<i>Argyresthia retinella</i> Zeller, 1839		FE TY AR DO AN LD
20.018	417	<i>Argyresthia spinosella</i> Stainton, 1849		FE TY AR DO AN LD
20.019	418	<i>Argyresthia conjugella</i> Zeller, 1839	Apple Fruit Moth	FE TY AR DO AN LD
20.020	419	<i>Argyresthia semifusca</i> (Haworth, 1828)		FE TY AR DO AN LD
20.021	420	<i>Argyresthia pruniella</i> (Clerck, 1759)	Cherry Fruit Moth	FE DO AN
20.022	421	<i>Argyresthia bonnetella</i> (Linnaeus, 1758)		FE TY AR DO AN LD
20.023	422	<i>Argyresthia albistria</i> (Haworth, 1828)		FE TY AR DO AN
20.024	423	<i>Argyresthia semitestacella</i> (Curtis, 1833)		FE AR DO AN
<b>LYONETIIDAE</b>				
21.001	263	<i>Lyonetia clerkella</i> (Linnaeus, 1758)	Apple Leaf Miner	FE TY AR DO AN LD
21.004	254	<i>Leucoptera laburnella</i> (Stainton, 1851)	Laburnum Leaf Miner	TY DO AN LD
21.005	256	<i>Leucoptera spartifoliella</i> (Hübner, [1813])		TY AR
<b>PRAYDIDAE</b>				
22.002	449	<i>Prays fraxinella</i> (Bjerkander, 1784)	Ash Bud Moth	FE AR DO AN LD
<b>AUTOSTICHIDAE</b>				
27.001	870	<i>Oegoconia quadripuncta</i> (Haworth, 1828)		AN
<b>OECOPHORIDAE</b>				
28.009	648	<i>Endrosia sarcitrella</i> (Linnaeus, 1758)	White-shouldered House-moth	FE TY AR DO AN LD
28.010	647	<i>Hofmannophila pseudospretella</i> (Stainton, 1849)	Brown House-moth	FE TY AR DO AN LD
28.011	645	<i>Borkhausenia minutella</i> (Linnaeus, 1758)		DO
28.012	644	<i>Borkhausenia fuscescens</i> (Haworth, 1828)		AR DO AN
28.019	649	<i>Esperia sulphurella</i> (Fabricius, 1775)		FE AR DO AN
28.025	654	<i>Pleurota bicostella</i> (Clerck, 1759)		FE TY AR DO AN LD
<b>CHIMABACHIDAE</b>				
29.001	663	<i>Diurnea fagella</i> ([Denis & Schiffermüller], 1775)		FE TY AR DO AN LD
29.002	664	<i>Diurnea lipsiella</i> ([Denis & Schiffermüller], 1775)		FE TY AR DO LD
29.003	665	<i>Dasystema salicella</i> (Hübner, 1796)		FE †
<b>LYPUSIDAE</b>				
30.003	660	<i>Pseudatemelia josephinae</i> (Toll, 1956)		TY
<b>PELEPODIDAE</b>				
31.001	658	<i>Carcina quercana</i> (Fabricius, 1775)		FE TY AR DO AN LD
<b>DEPRESSARIIDAE</b>				
32.002	667	<i>Semioscopis steinkellneriana</i> ([Denis & Schiffermüller], 1775)		LD
32.007	701	<i>Agonopterix ocellana</i> (Fabricius, 1775)		FE TY AR DO AN LD
32.008	709	<i>Agonopterix liturosa</i> (Haworth, 1811)		FE AN
32.010	710	<i>Agonopterix conterminella</i> (Zeller, 1839)		FE TY AR DO AN LD
32.011	704	<i>Agonopterix scopariella</i> (Heinemann 1870)		DO
32.016	696	<i>Agonopterix propinquella</i> (Treitschke, 1835)		FE AR DO AN
32.017	697	<i>Agonopterix arenella</i> ([Denis & Schiffermüller], 1775)		FE AR DO AN LD
32.018	688	<i>Agonopterix heracliiana</i> (Linnaeus, 1758)		FE TY AR DO AN LD

ABH	BF	Taxon name	Vernacular name	Counties
32.019	689	<i>Agonopterix ciliella</i> (Stainton, 1849)		FE AR DO LD
32.024	702	<i>Agonopterix assimilella</i> (Treitschke, 1832)		TY AR AN LD
32.026	698	<i>Agonopterix kaekeritziana</i> (Linnaeus, 1767)		FE AR DO AN LD
32.028	700	<i>Agonopterix pallorella</i> (Zeller, 1839)		DO
32.029	705	<i>Agonopterix umbellana</i> (Fabricius, 1794)		AR DO AN LD
32.030	706	<i>Agonopterix nervosa</i> (Haworth, 1811)		TY AR DO AN LD
32.031	695	<i>Agonopterix alstromeriana</i> (Clerck, 1759)		FE TY AR DO
32.032	713	<i>Agonopterix angelicella</i> (Hübner, [1813])		FE TY AR DO AN LD
32.035	714	<i>Agonopterix yeatiana</i> (Fabricius, 1781)		FE TY AR DO LD
32.036	672	<i>Depressaria radiella</i> (Goeze, 1783)	Parsnip Moth	AR DO AN LD
32.036	672	<i>Depressaria pastinacella</i> (Duponchel, 1838)		
32.036	672	<i>Depressaria heraclei</i> (Retzius, 1783) invalid		
32.038	674	<i>Depressaria badiella</i> (Hübner, 1796)		AR DO
32.039	670	<i>Depressaria daucella</i> ([Denis & Schiffermüller], 1775)		TY AR DO AN LD
32.040	671	<i>Depressaria ultimella</i> Stainton, 1849		DO
32.042	676	<i>Depressaria pulcherrimella</i> Stainton, 1849		FE DO
<b>COSMOPTERIGIDAE</b>				
34.004	898	<i>Limnaecia phragmitella</i> Stainton, 1851		FE AR DO AN
<b>GELECHIIDAE</b>				
35.001	845	<i>Syncopacma sangiella</i> (Stainton, 1863)		DO AN LD
35.002	849	<i>Syncopacma cinctella</i> (Clerck, 1759)		AN
35.010	843	<i>Aproaerema anthyllidella</i> (Hübner, [1813])		DO AN LD
35.011	853	<i>Anacampsis populella</i> (Clerck, 1759)		AN
35.017	797	<i>Neofaculta ericetella</i> (Geyer, [1832])		FE TY AR DO AN LD
35.018	858	<i>Hypatima rhomboidella</i> (Linnaeus, 1758)		FE TY AR DO AN LD
35.020	856	<i>Anarsia spartiella</i> (Schrank, 1802)		TY AR DO AN
35.026	855	<i>Acompsia cinerella</i> (Clerck, 1759)		FE DO LD
35.031	868	<i>Helcystogramma rufescens</i> (Haworth, 1828)		AR
35.036	747	<i>Chrysoesthia sexguttella</i> (Thunberg, 1794)		DO AN
35.038	789	<i>Bryotropha domestica</i> (Haworth, 1828)		TY AR DO AN LD
35.039	788	<i>Bryotropha politella</i> (Stainton, 1851)		FE TY AR DO
35.040	787	<i>Bryotropha terrella</i> ([Denis & Schiffermüller], 1775)		FE TY AR DO AN LD
35.041	786	<i>Bryotropha desertella</i> (Douglas, 1850)		AR DO LD
35.046	782	<i>Bryotropha senectella</i> (Zeller, 1839)		TY AR DO AN LD
35.047	779	<i>Bryotropha affinis</i> (Haworth, 1828)		AR DO AN
35.048	778	<i>Bryotropha umbrosella</i> (Zeller, 1839)		AR DO
35.048	778	<i>Bryotropha mundella</i> (Douglas, 1850)		
35.049	780	<i>Bryotropha similis</i> (Stainton, 1854)		TY AR DO AN
35.058	726	<i>Metzneria metzneriella</i> (Stainton, 1851)		DO
35.065	728	<i>Monochroa cytisella</i> (Curtis, 1837)		AR
35.066	735	<i>Monochroa tenebrella</i> (Hübner, [1817])		FE AR DO AN
35.076	741	<i>Monochroa suffusella</i> (Douglas, 1850)		AR
35.080	732	<i>Eulamprotes unicolorella</i> (Duponchel, [1843])		FE AN
35.081	731	<i>Eulamprotes atrella</i> ([Denis & Schiffermüller], 1775)		TY AR LD



ABH	BF	Taxon name	Vernacular name	Counties
35.085	762	<i>Athrips mouffetella</i> (Linnaeus, 1758)		AN
35.093	792	<i>Mirificarma mulinella</i> (Zeller, 1839)		FE TY AR DO AN
35.096	790	<i>Chionodes fumatella</i> (Douglas, 1850)		DO LD
35.101	802a	<i>Gelechia sororculella</i> (Hübner, [1817])		FE TY AR DO AN
35.111	821	<i>Scrobipalpa murinella</i> (Duponchel, [1843])		FE
35.114	812	<i>Scrobipalpa instabilella</i> (Douglas, 1846)		DO
35.115	815	<i>Scrobipalpa nitentella</i> (Fuchs, 1902)		DO LD
35.119	811	<i>Scrobipalpa samadensis</i> (Pfaffenzeller, 1870)		DO
35.119	811	<i>Scrobipalpa samadensis subsp. plantaginella</i> (Stainton, 1883)		
35.120	820	<i>Scrobipalpa artemisiella</i> (Treitschke, 1833)	Thyme Moth	DO
35.123	819	<i>Scrobipalpa costella</i> (Humphreys & Westwood, 1845)		AR AN
35.130	826	<i>Caryocolum vicinella</i> (Douglas, 1851)		AN LD
35.131	829	<i>Caryocolum marmorea</i> (Haworth, 1828)		DO LD
35.131	829	<i>Caryocolum marmoreum</i> (Haworth, 1828)		
35.132	830	<i>Caryocolum fraternella</i> (Douglas, 1851)		AR DO AN
35.133	832	<i>Caryocolum blandella</i> (Douglas, 1852)		AR AN
35.137	834	<i>Caryocolum tricolorella</i> (Haworth, 1812)		FE
35.141	765	<i>Teleiodes vulgella</i> ([Denis & Schiffermüller], 1775)		AR DO
35.146	776	<i>Teleiopsis diffinis</i> (Haworth, 1828)		AR DO AN
35.147	767	<i>Carpatolechia decorella</i> (Haworth, 1812)		DO
35.148	772	<i>Carpatolechia fugitivella</i> (Zeller, 1839)		AR AN
35.150	768	<i>Carpatolechia notatella</i> (Hübner, [1813])		AR DO
35.151	770	<i>Carpatolechia proximella</i> (Hübner, 1796)		FE AR DO AN LD
35.153	773	<i>Pseudotelphusa paripunctella</i> (Thunberg, 1794)		AR AN
35.159	760	<i>Exoteleia dodecella</i> (Linnaeus, 1758)		FE TY AR DO AN
<b>BATRACHEDRIDAE</b>				
36.001	878	<i>Batrachedra praeangusta</i> (Haworth, 1828)		FE TY AR DO AN
<b>COLEOPHORIDAE</b>				
Case-bearers				
37.006	491	<i>Coleophora gryphipennella</i> (Hübner, 1796)		FE DO AN LD
37.007	492	<i>Coleophora flavipennella</i> (Duponchel, 1843)		FE TY AR DO AN
37.015	493	<i>Coleophora serratella</i> (Linnaeus, 1761)		FE TY AR DO AN LD
37.022	504	<i>Coleophora lusciniapennella</i> (Treitschke, 1833)		FE TY AR AN LD
37.022	504	<i>Coleophora viminetella</i> Zeller, 1849		
37.028	510	<i>Coleophora juncicolella</i> Stainton, 1851		TY
37.029	511	<i>Coleophora orbitella</i> Zeller, 1849		AR
37.030	512	<i>Coleophora binderella</i> (Kollar, 1832)		TY
37.044	547	<i>Coleophora discordella</i> Zeller, 1849		FE AR DO AN LD
37.046	519	<i>Coleophora deauratella</i> Lienig & Zeller, 1846		FE AR DO AN
37.048	518	<i>Coleophora mayrella</i> (Hübner, [1813])		AR DO LD
37.050	532	<i>Coleophora albidella</i> ([Denis & Schiffermüller], 1775)		AR DO AN
37.055	541	<i>Coleophora pyrrhulipennella</i> Zeller, 1839		AR DO AN
37.063	544	<i>Coleophora albicosta</i> (Haworth, 1828)		FE TY AR DO AN LD
37.066	526	<i>Coleophora laricella</i> (Hübner, [1817])	Larch Case-bearer	FE TY DO AN LD
37.069	587	<i>Coleophora caespititiella</i> Zeller, 1839		AR AN

ABH	BF	Taxon name	Vernacular name	Counties
37.070	583	<i>Coleophora tamesis</i> Waters, 1929		AR DO AN
37.071	582	<i>Coleophora glaucicolella</i> Wood, 1892		FE TY AR DO AN LD
37.072	578	<i>Coleophora otidipennella</i> (Hübner, [1817])		FE AR DO AN
37.073	584	<i>Coleophora alticolella</i> Zeller, 1849		FE TY AR DO AN LD
37.074	581	<i>Coleophora taeniipennella</i> (Herrich-Schäffer, 1855)		FE TY AR AN
37.078	585	<i>Coleophora maritimella</i> Newman, 1873		DO
37.080	564	<i>Coleophora virgaureae</i> Stainton, 1857		DO
37.080	564	<i>Coleophora obscenella</i> sensu auctt. nec Zeller, 1849		
37.083	565	<i>Coleophora saxicolella</i> (Duponchel, [1843])		AR DO
37.088	573	<i>Coleophora atriplicis</i> Meyrick, [1928]		DO
37.089	570	<i>Coleophora pappiferella</i> Hofmann, 1869		FE
37.099	553	<i>Coleophora striatipennella</i> Nylander, 1848		FE AR DO AN
37.106	560	<i>Coleophora paripennella</i> Zeller, 1839		AN
<b>ELACHISTIDAE</b>				
38.004	610	<i>Elachista argentella</i> (Clerck, 1759)		FE TY AR DO AN LD
38.005	611	<i>Elachista triatomea</i> (Haworth, 1828)		DO
38.016	621	<i>Elachista subalbidella</i> Schläger, 1847		TY AR DO
38.018	623	<i>Elachista bisulcella</i> (Duponchel, 1843)		AN
38.022	594	<i>Elachista gleichenella</i> (Fabricius, 1781)		FE DO AN
38.025	597	<i>Elachista atricomella</i> Stainton, 1849		FE TY AR DO AN LD
38.026	598	<i>Elachista kilmunella</i> Stainton, 1849		AR AN
38.028	599	<i>Elachista alpinella</i> Stainton, 1854		AR DO
38.029	600	<i>Elachista luticomella</i> Zeller, 1839		FE AR DO AN
38.030	601	<i>Elachista albifrontella</i> (Hübner, [1817])		FE AR DO AN LD
38.032	602	<i>Elachista apicipunctella</i> Stainton, 1849		FE TY AR DO AN
38.036	606	<i>Elachista humilis</i> Zeller, 1850		AR DO
38.037	607	<i>Elachista canapennella</i> (Hübner, [1813])		FE TY AR DO AN LD
38.038	608	<i>Elachista rufocinerea</i> (Haworth, 1828)		FE AR DO AN
38.039	609	<i>Elachista maculicerusella</i> (Bruand, 1859)		FE AR DO AN LD
38.039	609	<i>Elachista monosemiella</i> Rössler, 1881		
38.041	625	<i>Elachista cinereopunctella</i> (Haworth, 1828)		AR AN
38.041	625	<i>Biselachista cinereopunctella</i> (Haworth, 1828)		
38.042	626	<i>Elachista serricornis</i> Stainton, 1854		FE
38.042	626	<i>Biselachista serricornis</i> (Stainton, 1854)		
38.045	629	<i>Elachista utonella</i> (Frey, 1856)		AR AN
38.045	629	<i>Biselachista utonella</i> (Frey, 1856)		
38.046	630	<i>Elachista albidella</i> Nylander, 1848		FE TY DO
38.046	630	<i>Biselachista albidella</i> (Nylander, 1848)		
38.047	631	<i>Elachista freyerella</i> (Hübner, [1825])		AR AN
38.047	631	<i>Cosmiotes freyerella</i> (Hübner, [1825])		
<b>PARAMETRIOTIDAE</b>				
39.001	905	<i>Blastodacna hellerella</i> (Duponchel, 1838)		FE TY AR DO AN
39.002	906	<i>Blastodacna atra</i> (Haworth, 1828)	Apple Pith Moth	DO AN
39.003	904	<i>Spuleria flavicaput</i> (Haworth, 1828)		TY AR DO AN

ABH	BF	Taxon name	Vernacular name	Counties
<b>MOMPHIDAE</b>				
40.001	885	<i>Mompha conturbatella</i> (Hübner, [1819])		TY AR DO
40.004	888	<i>Mompha propinquella</i> (Stainton, 1851)		FE TY AR DO AN
40.008	892	<i>Mompha subbistrigella</i> (Haworth, 1828)		FE AR DO AN
40.010	893	<i>Mompha epilobiella</i> ([Denis & Schiffermüller], 1775)		TY AR DO AN
40.011	880	<i>Mompha langiella</i> (Hübner, 1796)		AN
40.013	882	<i>Mompha locupletella</i> ([Denis & Schiffermüller], 1775)		FE TY AR DO AN
40.014	881	<i>Mompha terminella</i> (Humphreys & Westwood, 1845)		TY AR DO
40.015	883	<i>Mompha raschkiella</i> (Zeller, 1839)		FE TY AR DO AN LD
<b>BLASTOBASIDAE</b>				
41.002	873	<i>Blastobasis adustella</i> Walsingham, 1894		FE TY AR DO AN LD
41.002	873	<i>Blastobasis lignea</i> sensu auctt. nec Walsingham, 1894		
41.003	874	<i>Blastobasis lacticolella</i> Rebel, 1940		FE TY AR DO AN LD
41.003	874	<i>Blastobasis decolorella</i> sensu auctt. nec (Wollaston, 1858)		
<b>SCYTHRIDIDAE</b>				
43.004	915	<i>Scythris picaepennis</i> (Haworth, 1828)		FE DO
<b>ALUCITIDAE</b>				
			Many-plumes	
44.001	1288	<i>Alucita hexadactyla</i> Linnaeus, 1758	Twenty-plume Moth	FE TY AR DO AN LD
<b>PTEROPHORIDAE</b>				
			Plumes	
45.004	1501	<i>Platyptilia gonodactyla</i> ([Denis & Schiffermüller], 1775)		
			Triangle Plume	FE TY AR DO AN LD
45.006	1502	<i>Platyptilia isodactylus</i> (Zeller, 1852)	Hoary Plume	FE TY AR DO AN LD
45.007	1499	<i>Platyptilia tesseradactyla</i> (Linnaeus, 1761)	Irish Plume	FE TY
45.008	1504	<i>Gillmeria pallidactyla</i> (Haworth, 1811)	Yarrow Plume	FE TY AR DO
45.008	1504	<i>Platyptilia pallidactyla</i> (Haworth, 1811)		
45.010	1497	<i>Amblyptilia acanthadactyla</i> (Hübner, [1813])	Beautiful Plume	FE TY AR DO AN
45.011	1498	<i>Amblyptilia punctidactyla</i> (Haworth, 1811)	Brindled Plume	FE TY DO AN LD
45.012	1509	<i>Stenoptilia pterodactyla</i> (Linnaeus, 1761)	Brown Plume	FE TY AR DO AN LD
45.013	1508	<i>Stenoptilia bipunctidactyla</i> (Scopoli, 1763)	Twin-spot Plume	FE TY AR DO AN LD
45.025	1490	<i>Oxyptilus parvidactylus</i> (Haworth, 1811)	Small Plume	AN
45.028	1494	<i>Capperia britanniodactylus</i> (Gregson, 1867)	Wood Sage Plume	DO
45.028	1494	<i>Capperia britanniodactyla</i> (Gregson, 1867)		
45.030	1513	<i>Pterophorus pentadactyla</i> (Linnaeus, 1758)	White Plume	FE TY AR DO AN
45.033	1510	<i>Merrifieldia leucodactyla</i> ([Denis & Schiffermüller], 1775)		
			Thyme Plume	AN
45.037	1523	<i>Oidaematophorus lithodactyla</i> (Treitschke, 1833)		
			Dusky Plume	FE
45.044	1524	<i>Emmelina monodactyla</i> (Linnaeus, 1758)	Common Plume	FE TY AR DO AN LD
<b>SCHRECKENSTEINIIDAE</b>				
46.001	485	<i>Schreckensteinia festaliella</i> (Hübner, [1819])		FE TY AR DO AN LD
<b>EPERMENIIDAE</b>				
47.001	478	<i>Phaulernis fulviguttella</i> (Zeller, 1839)		FE TY AR AN
47.005	483	<i>Epermenia chaerophyllella</i> (Goeze, 1783)		FE AR DO AN LD
47.006	481	<i>Epermenia falciformis</i> (Haworth, 1828)		FE TY AR DO

ABH	BF	Taxon name	Vernacular name	Counties
<b>CHOREUTIDAE</b>				
48.001	385	<i>Anthophila fabriciana</i> (Linnaeus, 1767)	Nettle-tap	FE TY AR DO AN LD
48.002	388	<i>Prochoreutis myllerana</i> (Fabricius, 1794)		FE AR DO
<b>TORTRICIDAE</b>				
49.001	1013	<i>Olindia schumacherana</i> (Fabricius, 1787)		FE TY AR DO AN LD
49.004	1010	<i>Ditula angustiorana</i> (Haworth, 1811)	Red-barred Tortrix	FE AR DO AN LD
49.005	1006	<i>Epagoge grotiana</i> (Fabricius, 1781)		FE TY AR DO AN LD
49.008	1008	<i>Philedone gerningana</i> ([Denis & Schiffermüller], 1775)		FE TY AR DO AN
49.009	1007	<i>Capua vulgana</i> (Frölich, 1828)		FE AR DO AN LD
49.010	1009	<i>Philedonides lunana</i> (Thunberg, 1784)		FE TY AR DO AN
49.013	977	<i>Archips podana</i> (Scopoli, 1763)	Large Fruit-tree Tortrix	FE TY AR DO AN LD
49.014	979	<i>Archips crataegana</i> (Hübner, [1799])	Brown Oak Tortrix	DO
49.015	980	<i>Archips xylosteana</i> (Linnaeus, 1758)	Variiegated Golden Tortrix	FE TY AR DO AN
49.016	981	<i>Archips rosana</i> (Linnaeus, 1758)	Rose Tortrix	TY AR DO AN
49.020	974	<i>Argyrotaenia ljugiana</i> (Thunberg, 1797)		FE TY AR DO AN
49.022	1000	<i>Ptycholoma lecheana</i> (Linnaeus, 1758)		FE AR
49.024	969	<i>Pandemis corylana</i> (Fabricius, 1794)	Chequered Fruit-tree Tortrix	FE TY DO
49.025	970	<i>Pandemis cerasana</i> (Hübner, 1786)	Barred Fruit-tree Tortrix	FE TY AR DO AN LD
49.026	972	<i>Pandemis heparana</i> ([Denis & Schiffermüller], 1775)	Dark Fruit-tree Tortrix	FE TY AR DO AN LD
49.028	986	<i>Syndemis musculana</i> (Hübner, [1799])		FE TY AR DO AN LD
49.029	1002	<i>Lozotaenia forsterana</i> (Fabricius, 1781)		FE TY AR DO AN LD
49.031	989	<i>Aphelia paleana</i> (Hübner, [1793])	Timothy Tortrix	FE TY AR DO AN LD
49.032	990	<i>Aphelia unitana</i> (Hübner, [1799])		FE
49.033	988	<i>Aphelia viburnana</i> ([Denis & Schiffermüller], 1775)	Bilberry Tortrix	FE TY AR DO AN
49.035	991	<i>Clepsis senecionana</i> (Hübner, [1819])		FE TY AR DO AN
49.037	993	<i>Clepsis spectrana</i> (Treitschke, 1830)	Cyclamen Tortrix	FE TY AR DO AN LD
49.038	994	<i>Clepsis consimilana</i> (Hübner, [1817])		TY AR DO AN LD
49.039	998	<i>Epiphyas postvittana</i> (Walker, 1863)	Light Brown Apple Moth	FE AR DO AN LD
49.045	1029	<i>Eana osseana</i> (Scopoli, 1763)		FE TY AR DO AN LD
49.048	1031	<i>Eana penziana</i> (Thunberg, 1791)		DO AN LD
49.048	1031	<i>Eana penziana subsp. colquhounana</i> (Barrett, 1884)		
49.049	1024	<i>Cnephasia incertana</i> (Treitschke, 1835)	Light Grey Tortrix	FE TY AR DO AN LD
49.050	1020	<i>Cnephasia stephensiana</i> (Doubleday, 1849)	Grey Tortrix	FE AR DO AN LD
49.051	1021	<i>Cnephasia asseclana</i> ([Denis & Schiffermüller], 1775)	Flax Tortrix	FE TY AR DO AN LD
49.051	1021	<i>Cnephasia interjectana</i> (Haworth, [1811])		
49.055	1018	<i>Cnephasia communana</i> (Herrich-Schäffer, 1851)		DO
49.056	1019	<i>Cnephasia conspersana</i> Douglas, 1846		FE TY AR DO AN LD
49.059	1033	<i>Tortrix viridana</i> Linnaeus, 1758	Green Oak Tortrix	FE AR DO AN LD
49.060	1032	<i>Aleimma loeflingiana</i> (Linnaeus, 1758)		FE TY AR DO LD
49.061	1037	<i>Acleris holmiana</i> (Linnaeus, 1758)		FE TY AR DO AN LD
49.061	1037	<i>Croesia holmiana</i> (Linnaeus, 1758)		

ABH	BF	Taxon name	Vernacular name	Counties
49.062	1036	<i>Acleris forsskaleana</i> (Linnaeus, 1758)		AR DO AN
49.063	1035	<i>Acleris bergmanniana</i> (Linnaeus, 1758)		FE TY AR DO AN LD
49.064	1040	<i>Acleris caledoniana</i> (Stephens, 1852)		FE TY AR AN LD
49.065	1039	<i>Acleris comariana</i> (Lienig & Zeller, 1846)	Strawberry Tortrix	FE TY AR DO
49.066	1038	<i>Acleris laterana</i> (Fabricius, 1794)		FE TY AR DO AN LD
49.067	1059	<i>Acleris abietana</i> (Hübner, 1822)		DO
49.069	1041	<i>Acleris sparsana</i> ([Denis & Schiffermüller], 1775)		FE TY AR DO AN
49.070	1042	<i>Acleris rhombana</i> ([Denis & Schiffermüller], 1775)	Rhomboid Tortrix	FE TY AR DO AN LD
49.071	1062	<i>Acleris emargana</i> (Fabricius, 1775)		FE TY AR DO AN LD
49.073	1047	<i>Acleris schalleriana</i> (Linnaeus, 1761)		FE TY DO
49.076	1054	<i>Acleris cristana</i> ([Denis & Schiffermüller], 1775)		DO
49.077	1048	<i>Acleris variegana</i> ([Denis & Schiffermüller], 1775)	Garden Rose Tortrix	FE TY AR DO AN LD
49.078	1043	<i>Acleris aspersana</i> (Hübner, [1817])		FE TY AR DO AN LD
49.080	1053	<i>Acleris hastiana</i> (Linnaeus, 1758)		FE TY AR DO AN LD
49.082	1055	<i>Acleris hyemana</i> (Haworth, 1811)		TY AR DO LD
49.083	1044	<i>Acleris ferrugana</i> ([Denis & Schiffermüller], 1775)		FE AR DO AN LD
49.084	1045	<i>Acleris notana</i> (Donovan, 1806)		FE TY AR DO AN LD
49.087	1061	<i>Acleris literana</i> (Linnaeus, 1758)		FE TY AR
49.090	1015	<i>Eulia ministrana</i> (Linnaeus, 1758)		FE TY AR DO LD
49.091	1011	<i>Pseudargyrotoza conwagana</i> (Fabricius, 1775)		FE TY AR DO AN LD
49.092	921	<i>Phtheochroa inopiana</i> (Haworth, 1811)		AR
49.096	924	<i>Hysterophora maculosana</i> (Haworth, 1811)		AR DO AN
49.097	936	<i>Cochylimorpha straminea</i> (Haworth, 1811)		FE TY AR DO AN LD
49.101	926	<i>Phalonidia manniana</i> (Fischer von Röslerstamm, 1839)		DO
49.103	932	<i>Phalonidia affinitana</i> (Douglas, 1846)		DO
49.105	929	<i>Gynnidomorpha vectisana</i> (Humphreys & Westwood, 1845)		DO
49.106	927	<i>Gynnidomorpha minimana</i> (Caradja, 1916)		AR DO
49.108	930	<i>Gynnidomorpha alismana</i> (Ragonot, 1883)		AR
49.108	930	<i>Piercea alismana</i> (Ragonot, 1883)		
49.109	937	<i>Agapeta hamana</i> (Linnaeus, 1758)		FE TY AR DO AN LD
49.110	938	<i>Agapeta zoegana</i> (Linnaeus, 1767)		TY DO
49.111	954	<i>Eupoecilia angustana</i> (Hübner, [1799])		FE TY AR DO AN LD
49.115	942	<i>Aethes piercei</i> Obraztsov, 1952		FE TY AR DO AN LD
49.124	950	<i>Aethes francillana</i> (Fabricius, 1794)		DO
49.127	945	<i>Aethes cnicana</i> (Westwood, 1854)		FE TY AR DO AN LD
49.128	946	<i>Aethes rubigana</i> (Treitschke, 1830)		FE AR DO AN LD
49.133	968	<i>Cochylis nana</i> (Haworth, 1811)		FE TY AR LD
49.137	964	<i>Cochylis dubitana</i> (Hübner, [1799])		DO AN
49.139	966	<i>Cochylis atricapitana</i> (Stephens, 1852)		FE AR DO AN LD
49.140	967	<i>Cochylis pallidana</i> Zeller, 1847		DO LD
49.142	960	<i>Falseuncaria ruficiliana</i> (Haworth, 1811)		FE TY DO AN
49.144	1113	<i>Eudemis profundana</i> ([Denis & Schiffermüller], 1775)		FE

ABH	BF	Taxon name	Vernacular name	Counties
49.146	1089	<i>Apotomis semifasciana</i> (Haworth, 1811)		FE TY AR DO AN LD
49.149	1092	<i>Apotomis turbidana</i> Hübner, [1825]		FE TY AR LD
49.150	1093	<i>Apotomis betuletana</i> (Haworth, 1811)		FE TY AR DO AN LD
49.154	1087	<i>Orthotaenia undulana</i> ([Denis & Schiffermüller], 1775)		FE TY AR AN LD
49.156	1083	<i>Hedya nubiferana</i> (Haworth, 1811)	Marbled Orchard Tortrix	FE TY AR DO AN LD
49.157	1082	<i>Hedya pruniana</i> (Hübner, [1799])	Plum Tortrix	FE TY AR DO AN
49.158	1084	<i>Hedya ochroleucana</i> (Frölich, 1828)		FE
49.159	1085	<i>Hedya atropunctana</i> (Zetterstedt, 1839)		FE TY AR AN LD
49.159	1085	<i>Metendothenia atropunctana</i> (Zetterstedt, 1839)		
49.161	1063	<i>Celypha striana</i> ([Denis & Schiffermüller], 1775)		DO
49.164	1067	<i>Celypha cespitana</i> (Hübner, [1817])		DO AN LD
49.166	1076	<i>Celypha lacunana</i> ([Denis & Schiffermüller], 1775)		FE TY AR DO AN LD
49.167	1068	<i>Celypha rivulana</i> (Scopoli, 1763)		TY AR AN
49.167	1068	<i>Olethreutes rivulana</i> (Scopoli, 1763)		
49.172	1073	<i>Phiaris schulziana</i> (Fabricius, 1776)		FE TY AR DO AN LD
49.172	1073	<i>Olethreutes schulziana</i> (Fabricius, 1776)		
49.173	1075	<i>Phiaris micana</i> ([Denis & Schiffermüller], 1775)		FE TY AN
49.173	1075	<i>Olethreutes micana</i> ([Denis & Schiffermüller], 1775)		
49.173	1075	<i>Olethreutes olivana</i> (Treitschke, 1830)		
49.174	1074	<i>Phiaris palustrana</i> (Lienig & Zeller, 1846)		FE
49.174	1074	<i>Olethreutes palustrana</i> (Lienig & Zeller, 1846)		
49.180	1079	<i>Piniphila bifasciana</i> (Haworth, 1811)		AR AN
49.185	1109	<i>Lobesia littoralis</i> (Humphreys & Westwood, 1845)		DO AN LD
49.188	1099	<i>Endothenia marginana</i> (Haworth, 1811)		FE TY AN
49.192	1103	<i>Endothenia ericetana</i> (Humphreys & Westwood, 1845)		TY DO
49.192	1103	<i>Endothenia trifoliata</i> (Herrich-Schäffer, 1851)		
49.193	1104	<i>Endothenia quadrimaculana</i> (Haworth, 1811)		FE TY AR DO AN LD
49.194	1111	<i>Bactra lancealana</i> (Hübner, [1799])		FE TY AR DO AN LD
49.195	1110	<i>Bactra furfurana</i> (Haworth, 1811)		FE AR LD
49.200	1216	<i>Enarmonia formosana</i> (Scopoli, 1763)	Cherry Bark Tortrix	TY AR DO AN
49.201	1117	<i>Ancylis unguicella</i> (Linnaeus, 1758)		FE TY AR DO AN
49.202	1118	<i>Ancylis uncella</i> ([Denis & Schiffermüller], 1775)		FE TY AR DO AN LD
49.207	1119	<i>Ancylis geminana</i> (Donovan, 1806)		FE TY AR AN LD
49.211	1128	<i>Ancylis myrtillana</i> (Treitschke, 1830)		FE TY DO AN
49.214	1126	<i>Ancylis badiana</i> ([Denis & Schiffermüller], 1775)		FE TY AR DO AN LD
49.216	1120	<i>Ancylis mitterbacheriana</i> ([Denis & Schiffermüller], 1775)		DO AN LD
49.220	1162	<i>Rhopobota myrtillana</i> (Humphreys & Westwood, 1845)		TY AR DO AN LD
49.220	1162	<i>Griselda myrtillana</i> (Humphreys & Westwood, 1845)		
49.223	1159	<i>Rhopobota naevana</i> (Hübner, [1817])	Holly Tortrix	FE TY AR DO AN LD
49.224	1205	<i>Spilota ocellana</i> ([Denis & Schiffermüller], 1775)	Bud Moth	TY AR DO AN LD
49.228	1153	<i>Epinotia sordidana</i> (Hübner, [1824])		FE AN
49.229	1154	<i>Epinotia caprana</i> (Fabricius, 1798)		FE TY AR DO AN LD
49.230	1151	<i>Epinotia trigonella</i> (Linnaeus, 1758)		FE TY DO AN LD

ABH	BF	Taxon name	Vernacular name	Counties
49.231	1155	<i>Epipotia brunnichana</i> (Linnaeus, 1767)		FE TY AR DO AN
49.232	1152	<i>Epipotia maculana</i> (Fabricius, 1775)		FE
49.234	1150	<i>Epipotia abbreviana</i> (Fabricius, 1794)		AR DO LD
49.237	1144	<i>Epipotia signatana</i> (Douglas, 1845)		FE
49.238	1147	<i>Epipotia cruciana</i> (Linnaeus, 1761)	Willow Tortrix	FE TY DO AN LD
49.239	1148	<i>Epipotia mercuriana</i> (Frölich, 1828)		DO
49.240	1136	<i>Epipotia immundana</i> (Fischer von Röslerstamm, 1839)		FE TY AR DO AN LD
49.241	1149	<i>Epipotia crenana</i> (Hübner, [1817])		FE
49.242	1145	<i>Epipotia nanana</i> (Treitschke, 1835)		DO
49.244	1132	<i>Epipotia subocellana</i> (Donovan, 1806)		FE TY AR DO AN
49.245	1137	<i>Epipotia tetraquetrana</i> (Haworth, 1811)		FE TY AR AN
49.248	1139	<i>Epipotia tenerana</i> ([Denis & Schiffermüller], 1775)	Nut Bud Moth	FE TY AR DO AN LD
49.249	1134	<i>Epipotia ramella</i> (Linnaeus, 1758)		FE TY AR DO AN LD
49.252	1142	<i>Epipotia tedella</i> (Clerck, 1759)		FE TY AR DO AN LD
49.254	1133	<i>Epipotia bilunana</i> (Haworth, 1811)		FE AR DO AN LD
49.255	1138	<i>Epipotia nisella</i> (Clerck, 1759)		FE TY AR DO AN LD
49.257	1166	<i>Zeiraphera griseana</i> (Hübner, [1799])	Larch Tortrix	FE TY AR DO AN
49.259	1163	<i>Zeiraphera ratzeburgiana</i> (Saxesen, 1840)	Spruce Bud Moth	FE TY AR DO AN
49.260	1165	<i>Zeiraphera isertana</i> (Fabricius, 1794)		FE TY AR DO AN
49.264	1202	<i>Eucosma obumbratana</i> (Lienig & Zeller, 1846)		DO
49.265	1201	<i>Eucosma cana</i> (Haworth, 1811)		FE TY AR DO AN LD
49.266	1200	<i>Eucosma hohenwartiana</i> ([Denis & Schiffermüller], 1775)		FE TY AR DO AN LD
49.269	1197	<i>Eucosma campoliliana</i> ([Denis & Schiffermüller], 1775)		FE TY AR DO AN LD
49.272	1193	<i>Eucosma tripoliana</i> (Barrett, 1880)		DO
49.279	1169	<i>Gypsonoma dealbana</i> (Frölich, 1828)		FE TY AR DO AN LD
49.281	1168	<i>Gypsonoma sociana</i> (Haworth, 1811)		TY AN LD
49.284	1186	<i>Epiblema sticticana</i> (Fabricius, 1794)		TY AR DO AN
49.285	1184	<i>Epiblema scutulana</i> ([Denis & Schiffermüller], 1775)		FE TY AR DO AN
49.286	1184a	<i>Epiblema cirsiana</i> (Zeller, 1843)		FE TY AR DO AN
49.289	1187	<i>Epiblema costipunctana</i> (Haworth, 1811)		FE TY AR DO AN LD
49.290	1182	<i>Epiblema turbidana</i> (Treitschke, 1835)		DO
49.292	1174	<i>Notocelia cynosbatella</i> (Linnaeus, 1758)		FE AR DO AN LD
49.292	1174	<i>Epiblema cynosbatella</i> (Linnaeus, 1758)		
49.294	1175	<i>Notocelia uddmanniana</i> (Linnaeus, 1758)	Bramble Shoot Moth	TY AR DO AN LD
49.294	1175	<i>Epiblema uddmanniana</i> (Linnaeus, 1758)		
49.295	1178	<i>Notocelia roborana</i> ([Denis & Schiffermüller], 1775)		FE AR DO AN LD
49.295	1178	<i>Epiblema roborana</i> ([Denis & Schiffermüller], 1775)		
49.296	1179	<i>Notocelia incarnatana</i> (Hübner, [1800])		DO AN LD
49.296	1179	<i>Epiblema incarnatana</i> (Hübner, [1800])		
49.298	1176	<i>Notocelia trimaculana</i> (Haworth, 1811)		FE TY AR DO AN LD
49.298	1176	<i>Epiblema trimaculana</i> (Haworth, 1811)		
49.299	1208	<i>Pseudococcyx posticana</i> (Zetterstedt, 1839)		FE DO LD
49.299	1208	<i>Blastesthia posticana</i> (Zetterstedt, 1839)		

ABH	BF	Taxon name	Vernacular name	Counties
49.304	1207	<i>Clavigesta purdeyi</i> (Durrant, 1911)	Pine Leaf-mining Moth	DO
49.305	1210	<i>Rhyacionia buoliana</i> ([Denis & Schiffermüller], 1775)	Pine Shoot Moth	DO
49.307	1212	<i>Rhyacionia pinivorana</i> (Lienig & Zeller, 1846)	Spotted Shoot Moth	FE TY AR DO AN
49.309	1285	<i>Dichrorampha plumbana</i> (Scopoli, 1763)		FE TY AR DO AN
49.311	1287	<i>Dichrorampha aeratana</i> (Pierce & Metcalfe, 1915)		FE AR AN
49.313	1279	<i>Dichrorampha acuminatana</i> (Lienig & Zeller, 1846)		FE AR
49.315	1281	<i>Dichrorampha simpliciana</i> (Haworth, 1811)		AR
49.318	1284	<i>Dichrorampha vancouverana</i> McDunnough, 1935		DO
49.318	1284	<i>Dichrorampha gueneeana</i> Obratzsov, 1953		
49.320	1274	<i>Dichrorampha alpinana</i> (Treitschke, 1830)		FE TY AR AN
49.321	1273	<i>Dichrorampha petiverella</i> (Linnaeus, 1758)		FE TY DO
49.322	1276	<i>Dichrorampha plumbagana</i> (Treitschke, 1830)		FE TY AR DO AN
49.323	1283	<i>Dichrorampha montanana</i> (Duponchel, [1843])		FE TY AR DO AN
49.324	1257	<i>Cydia nigricana</i> (Fabricius, 1794)	Pea Moth	AR
49.325	1255	<i>Cydia ulicetana</i> (Haworth, 1811)		FE TY AR DO AN LD
49.325	1255	<i>Cydia succedana</i> ([Denis & Schiffermüller], 1775)		
49.332	1268	<i>Cydia coniferana</i> (Saxesen, 1840)		AR
49.338	1261	<i>Cydia pomonella</i> (Linnaeus, 1758)	Codling Moth	FE AR DO AN
49.341	1260	<i>Cydia splendana</i> (Hübner, [1799])		FE TY AR DO AN
49.342	1259	<i>Cydia fagiglandana</i> (Zeller, 1841)		AR DO AN
49.345	1219	<i>Lathronympha strigana</i> (Fabricius, 1776)		TY AR DO AN
49.347	1241	<i>Grapholita compositella</i> (Fabricius, 1775)		AR DO AN
49.347	1241	<i>Cydia compositella</i> (Fabricius, 1775)		
49.354	1251	<i>Grapholita jungiella</i> (Clerck, 1759)		FE TY AR DO AN LD
49.354	1251	<i>Cydia jungiella</i> (Clerck, 1759)		
49.357	1247	<i>Grapholita funebrana</i> Treitschke, 1835	Plum Fruit Moth	AR
49.359	1245	<i>Grapholita janthinana</i> (Duponchel, 1835)		AR DO
49.359	1245	<i>Cydia janthinana</i> (Duponchel, 1835)		
49.363	1228	<i>Pammene argyrana</i> (Hübner, [1799])		AR DO
49.365	1229	<i>Pammene albuginana</i> (Guenée, 1845)		DO AN
49.367	1236	<i>Pammene fasciana</i> (Linnaeus, 1761)		AR DO AN
49.367	1236	<i>Pammene fasciana f. herrichiana</i> (Heinemann, 1854)		
49.371	1239	<i>Pammene rhediella</i> (Clerck, 1759)	Fruitlet Mining Tortrix	AR DO
49.372	1232	<i>Pammene populana</i> (Fabricius, 1787)		FE TY AR DO AN
49.375	1234	<i>Pammene regiana</i> (Zeller, 1849)		TY AR DO AN LD
49.377	1237	<i>Pammene germmana</i> (Hübner, [1799])		AR
49.379	1272	<i>Pammene aurana</i> (Fabricius, 1775)		AR DO AN
49.380	1271	<i>Pammene gallicana</i> (Guenée, 1845)		TY AR DO AN
<b>PYRALIDAE</b>				
62.001	1428	<i>Aphomia sociella</i> (Linnaeus, 1758)	Bee Moth	FE TY AR DO AN LD
62.005	1426	<i>Achroia grisella</i> (Fabricius, 1794)	Lesser Wax Moth	TY DO AN
62.006	1425	<i>Galleria mellonella</i> (Linnaeus, 1758)	Wax Moth	FE TY DO
62.007	1433	<i>Cryptoblabes bistriga</i> (Haworth, 1811)		FE TY AR DO AN



ABH	BF	Taxon name	Vernacular name	Counties					
				FE	TY	AR	DO	AN	
62.012	1451	<i>Pyla fusca</i> (Haworth, 1811)		FE	TY	AR	DO	AN	
62.012	1451	<i>Matilella fusca</i> (Haworth, 1811)							
62.015	1462	<i>Delplanqueia dilutella</i> ([Denis & Schiffermüller], 1775)					DO	AN	
62.015	1462	<i>Pempeliella dilutella</i> ([Denis & Schiffermüller], 1775)							
62.027	1455	<i>Dioryctria simplicella</i> (Heinemann, 1863)					DO		
62.028	1454	<i>Dioryctria abietella</i> ([Denis & Schiffermüller], 1775)			TY	AR	DO		
62.035	1439	<i>Acrobasis advenella</i> (Zincken, 1818)		FE		AR	DO	AN LD	
62.035	1439	<i>Trachycera advenella</i> (Zincken, 1818)							
62.035	1439	<i>Eurhodope advenella</i> (Zincken, 1818)							
62.038	1437	<i>Acrobasis consociella</i> (Hübner, [1813])				AR			
62.042	1458	<i>Myelois circumvoluta</i> (Fourcroy, 1785)	Thistle Ermine				DO		
62.057	1485	<i>Phycitodes maritima</i> (Tengström, [1848])					DO	LD	
62.058	1483	<i>Phycitodes binaevella</i> (Hübner, [1813])				AR	DO		
62.059	1484	<i>Phycitodes saxicola</i> (Vaughan, 1870)					DO	AN	
62.062	1479	<i>Plodia interpunctella</i> (Hübner, [1813])	Indian Meal Moth					AN	
62.063	1475	<i>Ephestia kuehniella</i> Zeller, 1879	Mediterranean Flour Moth			AR		AN	
62.064	1473	<i>Ephestia elutella</i> (Hübner, 1796)	Cacao Moth			AR		AN	
62.069	1432	<i>Anerastia lotella</i> (Hübner, [1813])					DO	AN	
62.072	1417	<i>Pyralis farinalis</i> (Linnaeus, 1758)	Meal Moth					AN	
62.074	1421	<i>Aglossa pinguinalis</i> (Linnaeus, 1758)	Large Tabby	FE	TY	AR	DO		
62.075	1413	<i>Hypsopygia costalis</i> (Fabricius, 1775)	Gold Triangle				DO		
62.076	1415	<i>Hypsopygia glaucinalis</i> (Linnaeus, 1758)					DO		
62.076	1415	<i>Orthopygia glaucinalis</i> (Linnaeus, 1758)							
<b>CRAMBIDAE</b>									
63.003	1367	<i>Pyrausta cingulata</i> (Linnaeus, 1758)					DO	AN	
63.004	1364	<i>Pyrausta sanguinalis</i> (Linnaeus, 1767)						LD	
63.005	1365	<i>Pyrausta despicata</i> (Scopoli, 1763)		FE	TY		DO	AN LD	
63.007	1362	<i>Pyrausta purpuralis</i> (Linnaeus, 1758)		FE	TY	AR	DO	AN	
63.008	1363	<i>Pyrausta ostrinalis</i> (Hübner, 1796)		FE	TY		DO		
63.016	1386	<i>Anania fuscalis</i> ([Denis & Schiffermüller], 1775)		FE	TY	AR	DO	AN LD	
63.016	1386	<i>Opsibotys fuscalis</i> ([Denis & Schiffermüller], 1775)							
63.018	1378	<i>Anania coronata</i> (Hufnagel, 1767)			TY	AR	DO	AN LD	
63.018	1378	<i>Phlyctaenia coronata</i> (Hufnagel, 1767)							
63.018	1378	<i>Eurrhypara coronata</i> (Hufnagel, 1767)							
63.022	1385	<i>Anania crocealis</i> (Hübner, 1796)		FE		AR	DO	AN	
63.022	1385	<i>Ebulea crocealis</i> (Hübner, 1796)							
63.025	1376	<i>Anania hortulata</i> (Linnaeus, 1758)	Small Magpie	FE	TY	AR	DO	AN LD	
63.025	1376	<i>Eurrhypara hortulata</i> (Linnaeus, 1758)							
63.028	1375	<i>Ostrinia nubilalis</i> (Hübner, 1796)	European Corn-borer				DO		
63.029	1373	<i>Paratalanta pandalis</i> (Hübner, [1825])	Bordered Pearl	FE					
63.031	1395	<i>Udea ferrugalis</i> (Hübner, 1796)	Rusty-dot Pearl	FE	TY	AR	DO	AN	
63.033	1388	<i>Udea lutealis</i> (Hübner, 1809)		FE	TY	AR	DO	AN LD	
63.034	1390	<i>Udea prunalis</i> ([Denis & Schiffermüller], 1775)		FE	TY	AR	DO	AN LD	
63.037	1392	<i>Udea olivalis</i> ([Denis & Schiffermüller], 1775)		FE	TY	AR	DO	AN LD	

ABH	BF	Taxon name	Vernacular name	Counties
63.038	1405	<i>Pleuroptya ruralis</i> (Scopoli, 1763)	Mother of Pearl	FE TY AR DO AN LD
63.046	1403a	<i>Duponchelia fovealis</i> Zeller, 1847		AN
63.048	1408	<i>Palpita vitrealis</i> (Rossi, 1794)		DO
63.052	1398	<i>Nomophila noctuella</i> ([Denis & Schiffermüller], 1775)	Rush Veneer	FE TY AR DO AN LD
63.057	1356	<i>Evergestis forficalis</i> (Linnaeus, 1758)	Garden Pebble	FE TY AR DO AN LD
63.060	1358	<i>Evergestis pallidata</i> (Hufnagel, 1767)		FE TY AR DO AN LD
63.062	1332	<i>Scoparia subfusca</i> Haworth, 1811		FE TY AR DO AN LD
63.064	1334	<i>Scoparia ambigualis</i> (Treitschke, 1829)		FE TY AR DO AN LD
63.066	1333	<i>Scoparia pyraella</i> ([Denis & Schiffermüller], 1775)		FE TY AR DO AN LD
63.067	1338	<i>Eudonia lacustrata</i> (Panzer, 1804)		FE TY AR DO AN LD
63.067	1338	<i>Dipleurina lacustrata</i> (Panzer, 1804)		
63.069	1342	<i>Eudonia angustea</i> (Curtis, 1827)		FE TY AR DO AN LD
63.071	1341	<i>Eudonia lineola</i> (Curtis, 1827)		FE DO AN LD
63.072	1343	<i>Eudonia delunella</i> (Stainton, 1849)		FE TY AR DO AN LD
63.073	1340	<i>Eudonia trunciolella</i> (Stainton, 1849)		FE TY AR DO AN LD
63.074	1344	<i>Eudonia mercurella</i> (Linnaeus, 1758)		FE TY AR DO AN LD
63.075	1336	<i>Eudonia pallida</i> (Curtis, 1827)		FE TY AR DO AN
63.077	1290	<i>Chilo phragmitella</i> (Hübner, 1805)		FE TY AR DO AN LD
63.080	1293	<i>Chrysoteuchia culmella</i> (Linnaeus, 1758)		FE TY AR DO AN LD
63.081	1294	<i>Crambus pascuella</i> (Linnaeus, 1758)		FE TY AR DO AN LD
63.083	1297	<i>Crambus uliginosellus</i> Zeller, 1850		AR AN
63.084	1298	<i>Crambus ericella</i> (Hübner, [1813])		FE
63.086	1301	<i>Crambus lathoniellus</i> (Zincken, 1817)		FE TY AR DO AN LD
63.088	1302	<i>Crambus perlella</i> (Scopoli, 1763)		FE TY AR DO AN LD
63.089	1305	<i>Agriphila tristella</i> ([Denis & Schiffermüller], 1775)		FE TY AR DO AN LD
63.090	1306	<i>Agriphila inquinatella</i> ([Denis & Schiffermüller], 1775)		DO LD
63.091	1307	<i>Agriphila latistria</i> (Haworth, 1811)		DO
63.092	1303	<i>Agriphila selasella</i> (Hübner, [1813])		FE TY AR DO AN LD
63.093	1304	<i>Agriphila straminella</i> ([Denis & Schiffermüller], 1775)		FE TY AR DO AN LD
63.095	1309	<i>Agriphila geniculea</i> (Haworth, 1811)		DO LD
63.099	1313	<i>Catoptria pinella</i> (Linnaeus, 1758)		TY DO
63.100	1314	<i>Catoptria margaritella</i> ([Denis & Schiffermüller], 1775)		FE TY AR DO AN LD
63.114	1345	<i>Elophila nymphaeata</i> (Linnaeus, 1758)	Brown China-mark	FE TY AR DO AN LD
63.114	1345	<i>Nymphula nymphaeata</i> (Linnaeus, 1758)		
63.115	1331	<i>Acentria ephemerella</i> ([Denis & Schiffermüller], 1775)	Water Veneer	FE TY AR DO AN
63.115	1331	<i>Acentria nivea</i> (Olivier, 1791)		
63.116	1354	<i>Cataclysta lemnata</i> (Linnaeus, 1758)	Small China-mark	FE TY AR DO AN LD
63.117	1348	<i>Parapoynx stratiotata</i> (Linnaeus, 1758)	Ringed China-mark	FE TY AR DO
63.118	1350	<i>Nymphula nitidulata</i> (Hufnagel, 1767)	Beautiful China-mark	FE TY AR DO AN LD
63.118	1350	<i>Nymphula stagnata</i> (Donovan, 1806)		
63.121	1329	<i>Donacaula forficella</i> (Thunberg, 1794)		FE AR
63.121	1329	<i>Schoenobius forficella</i> Thunberg, 1794		

ABH	BF	Taxon name	Vernacular name	Counties
63.122	1330	<i>Donacaula mucronella</i> ([Denis & Schiffermüller], 1775)		FE TY AR DO AN LD
63.122	1330	<i>Donacaula mucronellus</i> ([Denis & Schiffermüller], 1775)		

## Species totals: Northern Ireland: 615

H33 Fermanagh:	369
H36 Tyrone:	324
H37 Armagh:	440
H38 Down:	475
H39 Antrim:	417
H40 Londonderry:	276

† *Dasystoma salicella* has also been recorded from Lissan Estate on the Londonderry/Tyrone border.

‡ The Tapestry Moth was last recorded in 1894, and is presumed extinct in NI.

## Acknowledgements

I'm very grateful to our Database Manager Pauline Campbell and Micro-moth Recorder John McClean for their support and for entrusting me with the job of producing this, to Dr. Ken Bond and John for the use of their checklist and to Catherine Bertrand for being an awesome "butterfly godmother".

## References

- Agassiz, D.J.L., Beaven, S.D. & Heckford, R.J. (2013). *A checklist of the Lepidoptera of the British Isles*. RES Publishing.
- Bond, K.G.M. (2009). Microlepidoptera of Northern Ireland Check-list. *Northern Ireland Environment Agency Research and Development Series No. 09/02*.
- Bond, K.G.M. & McClean, J. (2013). Checklist of Northern Ireland Microlepidoptera.
- Bond, K.G.M. & McClean, J. (2014). Checklist of Northern Ireland Microlepidoptera.
- Bond, K.G.M. & O'Connor, J.P. (2012). Additions, deletions and corrections to 'An annotated checklist of the Irish butterflies and moths (Lepidoptera)' with a concise checklist of Irish species and *Elachista biatomella* (Stainton, 1848) new to Ireland. *Bulletin of the Irish Biogeographical Society No. 36*.
- Sterling, P., Parsons, M. & Lewington, R. (2012). *Field Guide to the Micro-moths of Great Britain and Ireland*. British Wildlife Publishing.
- Tyner, A. (2014). Moth Checklist. [Online] [http://www.mothsireland.com/?page\\_id=381](http://www.mothsireland.com/?page_id=381) [Accessed 20 July 2014].

## Photos

Front cover: top: *Eucosma campoliliana*, Springmartin, Belfast, 1 July 2014; bottom: Honeysuckle Moth (*Ypsolopha dentella*), Ulster Folk Museum, Cultra, 10 July 2014. Samuel Millar.