

Diagnostic morphological characters of the females

Abdomen (Fig. 32), with distinctive stepped appearance, with seventh and eighth segments distinctly narrower than sixth, in both ventral and lateral view. Usually longer than in *efformata*.

Ostium slightly concave (Fig. 33, A). Sub-genital plate lacking central notch, lateral margins angled strongly inwards to posterior margin (B). Ductus bursae (C) relatively straight, forming shallow S-shape.....*plagiata*

Abdomen (Fig. 34) usually shorter, in ventral view rounded to apex, only narrowed sharply in lateral view.

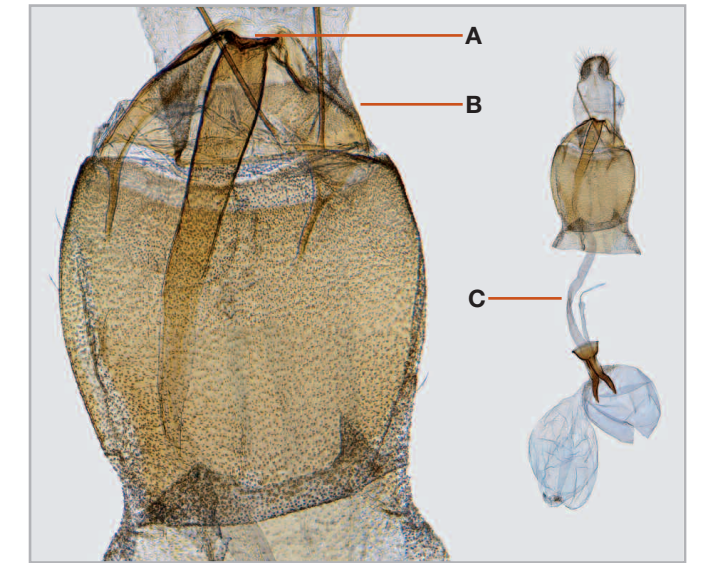
Ostium deeply concave, and adjacent part of anterior margin of sub-genital plate notched (Fig. 35, A).

Lateral and posterior margins of sub-genital plate almost at right angles (B).

Ductus bursae (C) very bowed, with sharp bend after straight section from ostium.....*efformata*



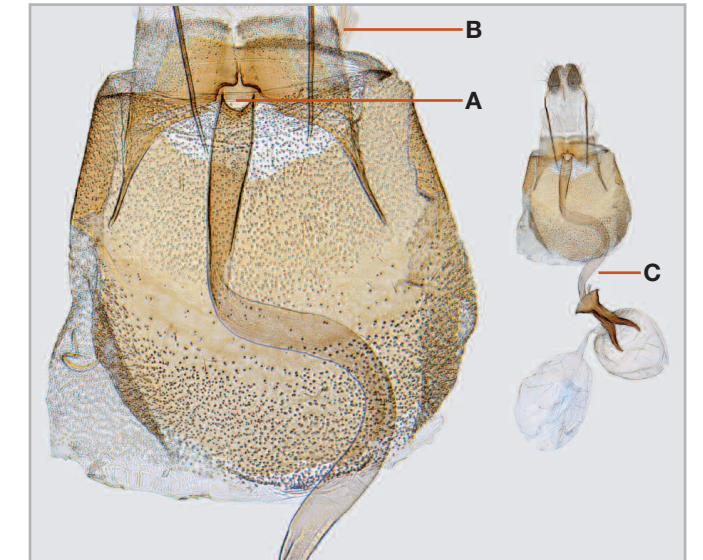
32. *Aplocera plagiata*



33. *Aplocera plagiata*, with ostium area enlarged



34. *Aplocera efformata*



35. *Aplocera efformata*, with ostium area enlarged